



Out and About With UniPlace

Flowers Needed

Sunday altar flowers are needed for February 26. If you would like to remember or honor someone, contact Ginny at ggputman@comcast.net or call the church office (352-5118) if you can assist in this ministry.



You may also choose any date that has special meaning to you. The fee is \$20.

It's in the air at UniPlace—talk of hospitality, open doors, neighbors, strangers, friends, welcome. Whom do we call a neighbor? Who is an outsider? An upcoming exhibition at the University YMCA, "Caritas: The Immigrant, the Word, and Life," will challenge us to consider these issues in light of our professed faith. Relief print artist Ramiro Rodriguez describes his work this way: "The print series combines passages from books of the Bible with images of contemporary immigrant issues such as rights abuses due to legislation." Also included are prints tracing the artist's own experiences as the son of immigrants.

The opening will be held Friday, March 2, 6:00-9:00 p.m. at the University YMCA, 1001 South Wright St., with an artist talk at 7:00 p.m. and live music at 7:30. The event is free and open to the public.

More information can be found at <http://www.universityymca.org/art/upcoming/>. No reservations are required. Just come to the University YMCA Friday, March 2, and look around for some of your UniPlace friends.

Did Cupid Miss You?



Never fear—you can treat yourself with a belated Valentine's Day sweet! The Outreach Team has a variety of gourmet, fair-trade, organic chocolates to

satisfy your every craving. Dark chocolate, espresso bean, milk chocolate with hazelnut, even caramel with a hint of sea salt. Each 3.5 oz. bar is \$3.50. A portion of each purchase benefits the Disciples of Christ Coffee Project.

This is a great time to absorb contemporary art and traditional Mexican music (son huasteco), to engage in conversation, and to get out and about with UniPlace!

Food Pantry Meets New Needs

As our church's sense of mission has grown, so has the mission of our food pantry. For years we have provided grocery bags to people in need. These bags contain much of what a family would need to provide nutritious meals throughout the week. But to make these meals, a person would need a kitchen to boil water for spaghetti, an oven to bake a tuna casserole, a refrigerator to keep the milk for the cereal. Many of the people who come through our doors are homeless and need food they can eat immediately, anywhere, with no cooking or refrigeration required. And so a new mission was born. Our food pantry now provides "instant meal" packages. At this time, we are in need of individual fruit cups or cans with a pull tab. Thank you for supporting our Open Door Ministry.



Messenger Deadline

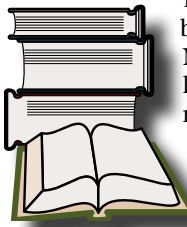
As a reminder, the deadline for submitting material for *The Messenger* is 4 p.m. on the Friday before publication. The next deadline is February 24. Unless prior arrangements are made, rarely can items that come in after 5 p.m. on the Monday following the deadline be included.

Articles should be submitted electronically to messenger@uniplace.org.

Ash Wednesday Service - Wednesday, February 22, 6:30 p.m.

Lenten Vespers - Sunday, February 26, 4:00 p.m.

Reading Group



The reading group will be meeting Wednesday, March 14 at 11:30 a.m., location yet to be determined. The book to be discussed will be *The Dry Grass of August* by Jean Mayhew.

Please contact Marie Roy at 714-1939 if you will be able to attend.

If you would like to be part of the UniPlace Book Club, please come join us. We meet the second Wednesday of each month at 11:30 a.m. for lunch, book discussion, and being together. We enjoy our gathering and will welcome you.

Another Sound Tech Needed

The sound tech team is looking for an additional member to run the sound board on Sundays. If you are interested, contact Fred Cook. The sound system isn't as intimidating as it appears to be.



University Place Christian Church (Disciples of Christ)

403 S. Wright Street, Champaign, Illinois 61820-4503

Office Hours - 9 a.m. - 3 p.m. Monday - Friday

Pastor Hours - 8 a.m. - 3:30 p.m. Monday - Thursday

Office Phone - (217) 352-5118

Home Page - www.uniplace.org

E-mail - upcc@uniplace.org

Office mail - secretary@uniplace.org

Pastor - pastor@uniplace.org

Messenger Editor - messenger@uniplace.org

Web Services - webmaster@uniplace.org

The Messenger (USPS 340-580, periodical postage paid at Champaign, IL) is the bi-weekly publication of University Place Christian Church.

Deadline for articles is 4 p.m. on the Friday before the Wednesday publication. Articles should be submitted to messenger@uniplace.org.

POSTMASTER: Send address changes to

University Place Christian Church,
403 S. Wright St., Champaign, IL 61820-4503

The Messenger

Disciple Women's Ministries



The Karen Circle will meet Thursday, March 1st at 7:30 p.m. in the home of Priscilla Lindstrom, 104 West Grand Avenue, St. Joseph, IL. They will continue their study of the Beatitudes, focusing this week on the sixth Beatitude... Blessed are the pure in heart, for they shall see God. Come prepared to share "how you have seen God this week." All women are welcome to join this time of fellowship and Bible study.

Friendship Circle will meet on February 21 at 9-11 a.m. in the church parlor. The hostess will be Melony Barrett. After a delicious breakfast, there will be conversation and a continued study of the Beatitudes. The Spring 2011 issue of *Just Women* magazine will be the source for lesson five of the Beatitudes (Greatly Honored Are Those Who Show Mercy). All women of the church are invited and welcome to share their ideas.

The Women's Work Weekend in Memphis is a go, however we have changed the dates! If you can join us April 27-30, we will enjoy a spiritual retreat and mini-mission trip rolled into one. Contact Cele Otnes for more information.

Church Life Events

Bruce Reardanz, Church Life Team

Attention All Basketball Fans. In preparation for the 2012 NCAA basketball tournament Church Life is planning an opportunity to practice for March Madness. On Sunday March 11, we will gather to watch the finals of the Big Ten tournament at 3:30 pm—to watch the Illini? Maybe or maybe not. The details are still being worked out but there will be food, drink, and fun—and amazing basketball. So save the date and look for more information soon.

Upcoming Recitals

You are invited to a voice recital in the Sanctuary at 3:00 p.m. on Sunday, February 26. Song cycles of Schumann, Debussy, and Vaughan Williams will be performed by mezzo-soprano Dee Breeding, soprano Danda Beard, and baritone John Abelson. Rachel Jensen will be the pianist. The singers are students of Richard Hertel.

Alba Cancel (our soprano soloist) will be having a degree recital on Thursday, February 23 at 7:30 p.m. at Smith Recital Hall. On her program will be a variety of composers from Purcell to Obradors. Alba will be performing baroque pieces by Purcell, the whole *Exsultate Jubilate* by Mozart, *Quattro Rispetti* by Wolf-Ferrari, selections from Wolf's *Italienisches Liederbuch* and four Obradors' spanish songs. The pianist will be Cara Chowning.

Prayer Focus

Let's pray for unity in our hearts and momentum from the Spirit for our congregation.

Please remember to pray daily for the following persons who are facing health challenges:

Betty Broyles
 Don Colbert (Jackie Terry's brother)
 Harold Colbert
 Clara Dunn
 Maybelle Felton
 Vian Garth (Virginia Garth's daughter-in-law)
 Kari Mahannah (Kay Mahannah's step-daughter)
 John Putman
 David Restad
 Betty Restad
 Bill & Virginia Risley
 Linda Sepahirod (Nancy Collins' sister)
 Mary DeAtley Smith (Jack DeAtley's sister)
 Eugene Tabor (Corrine Huffer's brother)
 Dick Trefzger (Jim's brother)
 Linda Weber



Please continue to keep in your prayers those who are serving in Iraq and Afghanistan.

Let's remember also those who are grieving and need God's strength and peace.

Thanks

To Our Church Family,

Thanks and blessings to our Church family for your love, prayers and concern for us during Jake's recent bout with pneumonia. Special thanks to Pastor Kris and Kay Mahannah.

In Christian Love,
 Jake & Sharon Hyland

Remember Our Residential Members

Each issue of *The Messenger* lists members of UniPlace that reside in residential living facilities. These members and friends need to be remembered in calls, visits, cards, and prayers.

Clark-Lindsey, 101 W. Windsor Road, Urbana 61802: Harriet Crabb
Prairie Winds, 1905 S. Prairie Winds, Urbana, IL 61802: Ola Luther, Donna Belle Kirby, Vivian Kennedy, Dawn Wright
C-U Regional Rehab Center, 302 Burwash Ave, Savoy 61874: Elberta Morse, Adeline Thurmon
Windsor of Savoy, 401 Burwash Ave, Savoy 61874: Helen Rademacher, Frances Carter, Homer Kuder
Amber Glenn, 1704 E. Amber Lane, Urbana, IL 61802: Betty Broyles
Bridle Brook Adult Community, 1617 A Patton Dr. Mahomet, IL 61853: Bill & Virginia Risley,
Aspen Ridge Care Centre, 2530 N. Monroe St., Decatur, IL 62526: Clara Dunn
ASTA Care Center, 1240 N. Market, Paxton, IL 60957: Susan Kiefer
Evenglow Lodge, 1200 N. Evenglow Lane, Pontiac, IL 61764: Frank Kimpling

Scheduled Events

Saturday, February 18

7:00 p.m. – Some Enchanted Evening

Sunday, February 19

9:00 a.m. – Church School

9:00 a.m. – Coffee Fellowship

9:15 a.m. – Chancel Choir Rehearsal

10:00 a.m. – Worship

11:15 a.m. – Soup Luncheon

Monday, February 20

7:30 p.m. – Chime Choir

Tuesday, February 21

9:00 a.m. – Friendship Circle

Wednesday, February 22

Ash Wednesday - Lent Begins

9:30 a.m. – Food Assistance Program

6:30 p.m. – Ash Wednesday Service

7:00 p.m. – Chancel Choir

Friday, February 24

4:00 p.m. – *The Messenger* Deadline

Sunday, February 26

9:00 a.m. – Church School

9:00 a.m. – Coffee Fellowship

9:15 a.m. – Chancel Choir Rehearsal

10:00 a.m. – Worship

3:00 p.m. – Hertel Student Recital

4:00 p.m. – Lenten Vespers

Monday, February 27

11:45 a.m. – Spiritual Disciplines

7:30 p.m. – Chime Choir

Wednesday, February 29

9:30 a.m. – Food Assistance Program

The Messenger Mailed Out

7:00 p.m. – Chancel Choir

Thursday, March 1

7:30 a.m. Morning Joe Bridle Brook

4:00 p.m. – Trustees



Reflections from page 8

they can do for us. But that's not our real calling—in Lent or ever. Our calling as a congregation is to walk this "journey of gestation" with others, trusting the Spirit to lead, and trusting that the Spirit has given us everything we need so the Spirit's work can be delivered.*

We begin Lent with a service of ashes on February 22. The ashes remind us that all along life's way we are dying. Old ways of being, old ways of doing -- all fall around us like leaf litter on the forest floor. The process of letting go creates fertile ground for what the Creator will bring to life even in the midst of ashes and dirt. Death does not have the last word, though it does have the first. We need it to have the first. So I hope to see you on Ash Wednesday for the first step in our Lenten journey.

Death, however, never has the last word. Our journey points us through death to eternal life in Christ. We travel this Lenten season as pilgrim mid-wives, aware that we are walking this Way with one who brings us to new life. Join us each week in Lent as through worship we make our way toward Easter.

Blessings,

Pastor Kris

*thanks to Taylor Burton-Edwards article "Why Lent" for inspiration for this article and its quotes

Choir Notes



Leonard Rumery, Music Director

On February 19, the Chancel Choir will sing Bortniansky's seventh setting of the *Cherubic Hymn*. Dmitri Bortniansky (1751-1825) was a Russian composer. Although he wrote operas and symphonic works, he is best known for his liturgical music for the Russian Orthodox Church. The style of his sacred works was the basis for the liturgical music of all subsequent Russian composers, for instance Rimsky-Korsakov, Archangelsky, and even Stravinsky. His musical talent was recognized as a child and he began his studies in Russia with the Italian Galuppi, who took the child to Italy in 1769. Thus it is, that the most influential style of Russian church music is actually based on the Italian choral music of Mozart's time. The *Cherubic Hymn* is a part of the Liturgy of St. John Chrysostom. The text begins "We who mystically represent the Cherubim and chant the thrice-holy hymn to the life-giving Trinity." It is sung in almost every Russian Orthodox mass, which is probably why there are so many musical versions of it. With respect to the cherubim themselves, take a look at the very scholarly wikipedia article. We don't pay much attention to these Biblical beings, but they are quite interesting.

On February 26 the anthem will be *O Pray for the Peace of Jerusalem* by Thomas Tomkins (1572-1656). Tomkins was the most famous of a family of musicians. He studied with William Byrd, the greatest composer of the Elizabethan period. Tomkins sang as a chorister in the Chapel Royal and later became a prominent organist at Worcester Cathedral. He worked at the Chapel Royal as a Gentleman Ordinary under the great Orlando Gibbons. Tomkins wrote in most of the genres of the Stuart period: madrigals, anthems, consort music, keyboard works. *O Pray for the Peace of Jerusalem* is part of Psalm 122:6.

Only In America

...can a pizza get to your house faster than an ambulance.

...are there handicap parking places in front of a skating rink.

...do drugstores make the sick walk all the way to the back of the store to get their prescriptions while healthy people can buy cigarettes at the front.

...do people order double cheeseburgers, large fries, and a diet coke.

...do banks leave both doors open and then chain the pens to the counters.

...do we leave cars worth thousands of dollars in the driveway and put our useless junk in the garage.

...do we use answering machines to screen calls and then have call waiting so we won't miss a call from someone we didn't want to talk to in the first place.

...do we buy hot dogs in packages of ten and buns in packages of eight. (this has always bugged me!)

...do we use the word 'politics' to describe the process so well: 'Poli' in Latin meaning 'many' and 'tics' meaning 'bloodsucking creatures'.

...do they have drive-up ATM machines with Braille lettering.



Birthdays

February

- 1 - Noah Lee
- 5 - Suzie Reardanz
- 6 - Charles Graves
- 8 - Hae Jong Lee
- 10 - David Ruzic
- 12 - William Strutz
- 13 - Bill Risley
- 18 - Jackie Terry, Luther Terry
- 20 - Jayme Francis
- 21 - Dawn Wright
- 23 - Norma Rodell, Carol Decker
- 24 - Kaitlyn Berg



March

- 1 - Mary Stuff
- 4 - Cecil Wilkinson, Rod Allen
- 5 - Oscar Lewis
- 6 - Cheryl Lehman
- 8 - Gladys Colbert
- 9 - Mary Wallace
- 10 - Lynnell Lacy
- 11 - Linda Weber, Ted Veatch, Kimberly Clagg
- 12 - Ray Meyers, Dwayne McBride
- 19 - Dorothy Wales
- 22 - Janan Stiles, Randy Dills, Kate Webster
- 23 - Cele Otnes, Eamon Plante, Sue Arnold
- 24 - Clyde Smith
- 26 - Emiko Kobori-Lee
- 27 - Priscilla Lindsterom
- 29 - Tom Heinhorst
- 30 - Fred Fechtmann

(If you know of a birthday that is before March 31 and is not on this list, please let the church office know)

Worship News

Jane Freyfogle, Worship Team

Sunday, February 19, 2012, Worship – 10:00 a.m.

Have you heard of the Lenten tradition to “bury the alleluia” for Lent? Alleluia has come to have a particular association with the celebration of Easter. Intentionally omitting it from the liturgy during Lent, a kind of verbal fast, can create a sense of anticipation and greater joy when the familiar word of praise returns on Easter! We will let alleluia “rest” during Lent so that when it appears on Easter, we may hear it afresh. This is the last Sunday before Lent, and we will “bury the alleluia” in worship.

The scripture readings for this week are Isaiah 43: 18-25 and Mark 2: 1-12. Pastor Kris’ sermon title, “Which is Easier?” refers to the passage in Mark when Jesus responds to the scribes in Capernaum after they challenged His words of forgiveness to the paralytic. “Which is easier, to say to the paralytic, ‘Your sins are forgiven’ or to say, ‘Stand up and take your mat and walk?’” Be in worship to hear more!

Wednesday, February 22, 2012, Ash Wednesday Service – 6:30 p.m.

The season of Lent begins today, and we will have a service of ashes and communion as a way to start on our Lenten journey of 2012. The Gospels of Matthew, Mark and Luke tell of Jesus’ forty days of fasting and facing temptations in the desert before the beginning of his public ministry. Ash Wednesday marks the beginning of this 40 day liturgical period. The placing of ashes on the forehead is a sign of confession and repentance. All are welcome to this short but meaningful service as we mark the start of Lent and the beginning of Lent at UniPlace 2012.

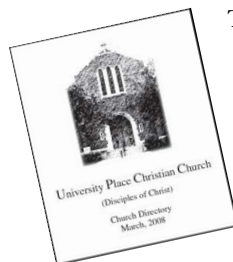
Sunday, February 26, 2012, First Sunday in Lent Worship - 10:00 a.m.

We begin our Lenten worship theme, “Treasure These Things...” this week. In the passage from Matthew 6: 19-21, Jesus teaches that “where your treasure is, there your heart will be also.” Pastor Kris will help us examine “things to treasure” as we move through the Lenten season. Read Mark 1:9-15 and Psalm 25 in preparation for this week’s message.

Sunday, February 26, 2012, Lenten Vespers – 4:00 p.m.

This is the first of our Sunday afternoon Lenten Vespers. Pastor Kris will lead a 45-minute time for further reflection and conversation on our Lenten journey, with the personal devotional booklets made available to everyone and the Sunday morning worship experience as guides for us. All are invited and encouraged to come.

Church Directory Available



The 2012 Church Director is now available in the church office.

A continually updated electronic version of the Church Directory is available in PDF format. Go to www.uniplace.org/directory then click on “request”. Complete the request form and a copy will be sent to you by return e-mail.

On that each web page is a method to add or modify information that appears in the directory. Click on the “Update Your

Contact Info” button that appears on the lower right. Fill out the web form to make additions or changes (you may also contact the church office).

Please note we would like to include e-mail addresses as well as birthdays (month/day only) in the listing.

How To Find Out What Is Going On

- Read your copy of *The Messenger*
- Check the web at www.uniplace.org
- Save the bulletin announcements
- Attend Board Meetings
- Call Church Office: 352-5118

Outreach Notes

Waunita Kinoshita, Mission and Outreach Team

Our UPCC Super Bowl big party weekend is over!!!! But, the need for millions of bowls of soup in our hungry world and community goes on day after day. AND, thanks to your giving we made many gallons of soup this past Sunday. We tossed all those items you gave into the pots and came up with the most delicious soup ever because it was made with those special ingredients, love and caring.

This Sunday join us, and several of our community folks, for a soup luncheon following the service. Just bring your appetite. If there is someone who you would like to invite, please do.

All the gallons of soup left after our luncheon will be delivered in the following weeks to the TIMES Center and the Women's Shelter as they need it.

What a SOUPER Sunday! And, more exciting things to come:

The weekend of March 9-11 we will highlight our Disciple work in the Democratic Republic of Congo. Mary Wallace's mother, Jean Wallace, will share her experience traveling with other Disciple women to visit our work in the Democratic Republic of Congo and Republic of Congo.

Linda Idoine will also be with us for the weekend and share in various events.

A brunch will be held from 10:00 to 12:00 in the church parlor on Saturday morning, March 10th at which Jean will speak.

Linda will share with folks at two evening dinners and again on Sunday morning during the Church School hour. Watch for further details.

Week of Compassion: Sharing resources, changing lives, spreading joy

All year long, for decades, Disciples of Christ in the United States and Canada have shared with others around our world. Each year we emphasize that sharing in a special week. At UPCC we are celebrating that "Week of Compassion" from February 19th to the 26th. We are sharing through our soup making and soup luncheon. We are sharing through our giving to the special offering. We are sharing as we find ways in our daily lives to respond to our belief that all we have and all that we are is a gift from God. And, as we share we bring joy to others, to ourselves, and to God.

Last year Week of Compassion shared this joy with others in fifty six countries and twenty seven states. We were there to help in floods, earthquakes, tornadoes, hunger, and suffering. We were there to tell folks that they are loved and that we care. We were there to bring them joy We were there and God was there through us.



Week of Compassion

Amy Gopp, Wednesday, August xx, 2011

Trauma Healing and Resilience in Haiti

The impact of the earthquake that devastated Haiti more than two years ago is still enormous. While Week of Compassion has responded faithfully to the plethora of needs that emerged as a result of that overwhelming disaster--including material assistance in the form of food, water, blankets, medical supplies, and hygiene kits--we also support spiritual, pastoral, and psychosocial care for those who have experienced trauma. To that end, Week of Compassion supports the STAR Program (Seminars on Trauma Awareness and Resilience) of Eastern Mennonite University's Center for Justice and Peacebuilding. STAR was established soon after 9/11 and has been working in the areas of trauma healing, recovery, and resilience ever since. In the aftermath of the 2010 earthquake in Haiti, an ecumenical partnership was created to form and fund STAR-Haiti. Week of Compassion is one of the founding partners and faithful supporters of this life-changing work across Haiti.

Now staffed and operated by Haitians, they refer to the trauma healing seminars as "Twomatizasyon ak Wozo," which means "Trauma and Resilience." "Wozo" is a local tree that bends with the wind but then rights itself and does not break. It is a symbol of resilience and strength, able to survive regardless of the circumstances. Many grassroots women's movements across the country use this tree as an emblem. There are even songs explaining how resilient the wozo trees are.

Thanks to you and your gifts to Week of Compassion, we are not only providing material assistance after a disaster, but also on-going, long-term psychosocial support, trauma counseling, and spiritual care to those who will, undoubtedly, continue to experience the effects of trauma for a while to come. We are there, accompanying them, present in their time of need. And they teach us courageous compassion and what it means to be truly resilient--just like a wozo tree.

Web Messenger

 **The Messenger**

You can get *The Messenger* even before the issue is printed and mailed on Wednesdays. If you request notification, you will get an e-mail in the early morning hours of Wednesday with a clickable link that will take you to the church web site where you can download a PDF file of the latest issue.

The mailed copy is printed only in black and white, but the PDF file is **still produced in the original, full color.**

Go to www.uniplace.org/messenger. Where you see "subscribe (or unsubscribe)", click on the "click here" and fill out the request form so you will be notified when the new issue is available. The web version **saves the church the cost of printing and mailing your copy of *The Messenger***, and you will get the news faster.

A People-to-People Trip to Congo for Illinois-Wisconsin Region

In response to interest expressed by several members of the University Place Christian Church (UPCC) in Champaign, IL., Dr. Eyamba G. Bokamba, a native of the Democratic Republic of the Congo (DRC) and a member of UPCC, is planning to lead "a people to people" delegation to the country in either May or August, 2012. Any interested member of the Christian Church (Disciples of Christ) and the United Church of Christ is invited to join the delegation.

Travel schedule. The tentative schedule proposed by Eyamba is as follows:

May 12 or 13, 2012: Departure from U.S. for DRC
June 1 or 2: Return flight to U.S.
August 4, 2012: Departure from U.S.
August 22: Return Flight to U.S.

Trip's objectives. The visit to DRC is intended to achieve at least the following three interrelated goals:

Acquaint ourselves first hand with the immensity of the CDCC (Disciples of Christ Church Community in the Congo) and its work that is carried out by Disciples-trained clergy and laypersons;

Conduct exploratory conversations with one or two selected CDCC's community/ communities (or "mission post" in the old terminology) for the possibility of establishing a Global Mission Church partnership for which I have been asked by UPCC's Moderator to draft a proposal this calendar year;

Experience life in a God-given rare paradise on earth that has faced enormous difficulties since King Leopold's fiefdom era (1879-1908), and yet promises to rise again and reclaim its destiny in Africa.

Estimated travel expenses will be between \$3,000-3,500 per person. Chicago O'Hare appears to be the ideal departure point to insure travel as a delegation.

If May is the chosen option, at least a month must be allowed for visas applications at the necessary embassies to avoid complications. The same would hold with the August date, keeping in mind the high demand during the so-called high season. The application for visas to DRC requires invitation letters from the hosts in the DRC; in our case, the University and the CCDCC. Because of these requirements, Eyamba needs preliminary indications of how many people plan to travel in order to ascertain if the trip will occur and to request the invitation letters. **Please RSVP by February 20, 2012. Definite commitments for the trip must be made by no later than February 29** to facilitate the planning.

Please contact Eyamba Bokamba by email at georgesbokamba@yahoo.com or his cell phone at 217-840-9532.

Serving Schedule

Sunday, February 19, 2011

Elders – Jane Freyfogle and Clyde Smith
Diaconate – Charity: Ellie Broyles, Bonnie Cook, Jake Hyland, Jane Heaton, Emily Otnes, Bruce Reardanz, Suzie Reardanz, Tim Reardanz, Marilyn Ruzic, Derryl Singley, Mica Witt, Dawn Wright

Communion Ministry – Suzie Reardanz

Liturgist – Delré Smith

Coffee Fellowship – Gher Class

Flower Delivery – Van Boyd

Offering Counters – Rick & Reneé Potter Broyles

Sound Technician – Fred Cook

Hospital Calling For Week – Cele Otnes

Snow Removal Crew – Eric Freyfogle and Bruce Reardanz

Wednesday, February 22, 2011

Elders – Bernard Archer and Richard Hertel

Sunday, February 26, 2011

Elders – Jim Holiman and Mary Wallace
Diaconate – Hope: Rod Allen, Ally Cozad, Alex Doyle, Fred Fechtmann, Marcia Gatens, Alie Lewis, Kevin Price, Elizabeth Slifer, Janan Stiles, John Trefzger

Communion Ministry – Janan Stiles

Liturgist – Delré Smith

Coffee Fellowship – Gher Class

Flower Delivery – John Trefzger

Offering Counters – Rick & Reneé Potter Broyles

Sound Technician – Bill Strutz

Hospital Calling For Week – Linda Weber

Snow Removal Crew – Jim and John Trefzger

Communion to residential members for the month of February:

Team E – Rick Broyles and Jane Freyfogle
Team F – Jim & Dorie Trefzger

Directory Changes

Please make the following cumulative changes to your Directory (listed from newest to oldest with changes in BOLD):

Change: Dawn Wright, **337-8963, 1905 S. Prairie Winds Dr., #230, Urbana, IL 61802**

Change: Vivian Kennedy, **337-8937**

Change: Ginny Putman, **ggputman@comcast.net**

Change: Kate Webster, **203 E. LaSalle St., Princeton, IL 61356**

Deceased: Helen Moore

REFLECTIONS OF LIGHT

The season of Lent begins with Ash Wednesday, which falls this year on February 22. Lent is a season which calls the whole church to prepare itself to live more deeply into the baptismal covenant we share—in worship, in small-group meetings, and through personal and corporate disciplines of devotion, worship, mercy, and justice.

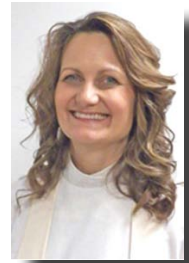
But why do we do this?

It's not just for ourselves. Lent isn't some kind of personal spiritual marathon! We do this as a congregation so we can be midwives for the work the Holy Spirit is doing in others in our midst.* Who are those others in whom the Holy Spirit is at work?

Some of those others are preparing for baptism. Some are preparing for a re-commitment to a life of faith. Some are seeking reconciliation. Some are growing through the process of making difficult decisions. Some are letting go of old ways of being that have not served well their life of faith. And some may be getting ready to take a significant next step in their commitment to ministry in the name of Jesus.

It's challenging work to be midwives—to be those who accompany others in major new things the Spirit is bringing to birth in their lives. It is a different way of marking a season than what we may be used to doing in preparation for a holiday or holy day. We may be more accustomed to having programs designed by experts who put the focus on what

Continued on page 4



The Messenger (USPS 340-580) Published Biweekly
Periodical postage paid at Champaign, IL
POSTMASTER: Send address changes to
University Place Christian Church,
403 S. Wright St., Champaign, IL 61820-4503

University Place Christian Church (Disciples of Christ)
403 S. Wright Street
Champaign, IL 61820-4503